

Setting Up For *Love's Labour's Lost*



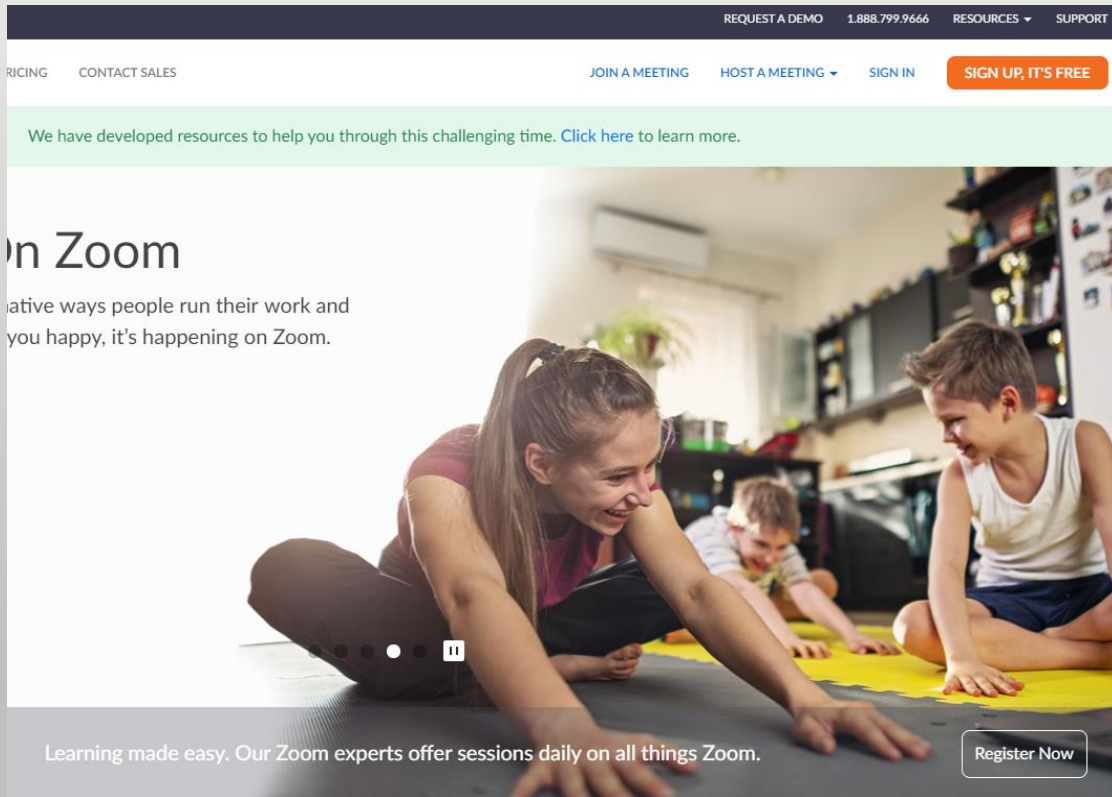
A Quick Setup Guide for Zoom Theatre

A Quick Setup Guide for Zoom Theatre



You spend all day on Zoom meetings, so why change your setup to enjoy Zoom theatre? Because theatre is fun, not work! Take a little time to optimize your living room for Zoom theatre *before* the start of the show so you're not rushed for a great experience.

Sign Up For Zoom



REQUEST A DEMO 1.888.799.9666 RESOURCES SUPPORT

PRICING CONTACT SALES JOIN A MEETING HOST A MEETING SIGN IN SIGN UP, IT'S FREE

We have developed resources to help you through this challenging time. [Click here](#) to learn more.

on Zoom

ative ways people run their work and you happy, it's happening on Zoom.

Learning made easy. Our Zoom experts offer sessions daily on all things Zoom.

Register Now

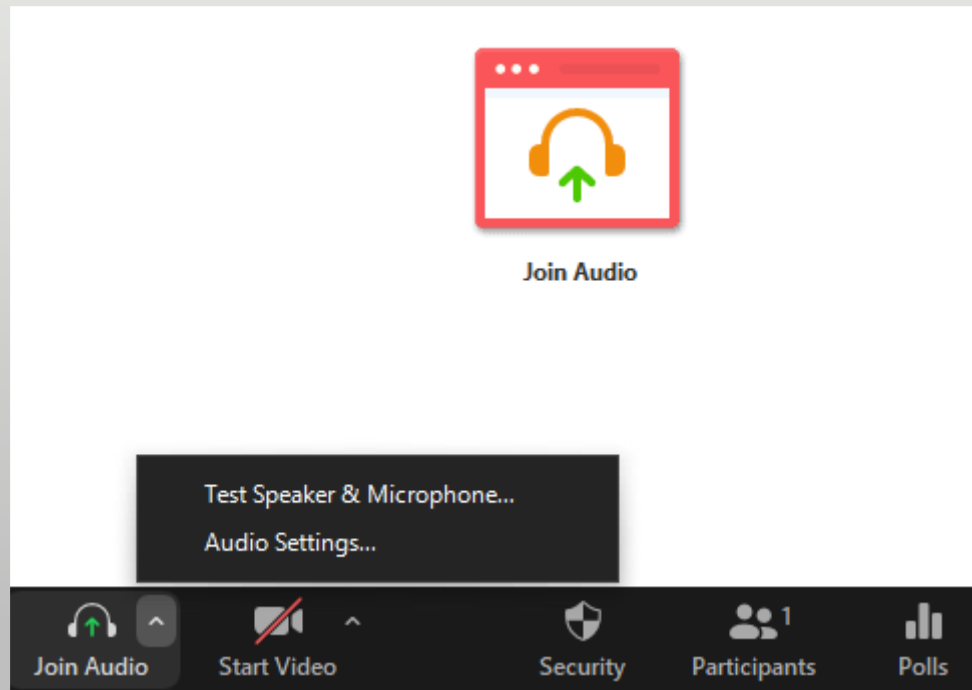
If you don't already have a Zoom account home page at <https://zoom.us/>, click "Sign up it's free" in the top right and follow the instructions. It only take a few minutes, and it is indeed free.

Connect Your Laptop To Your TV



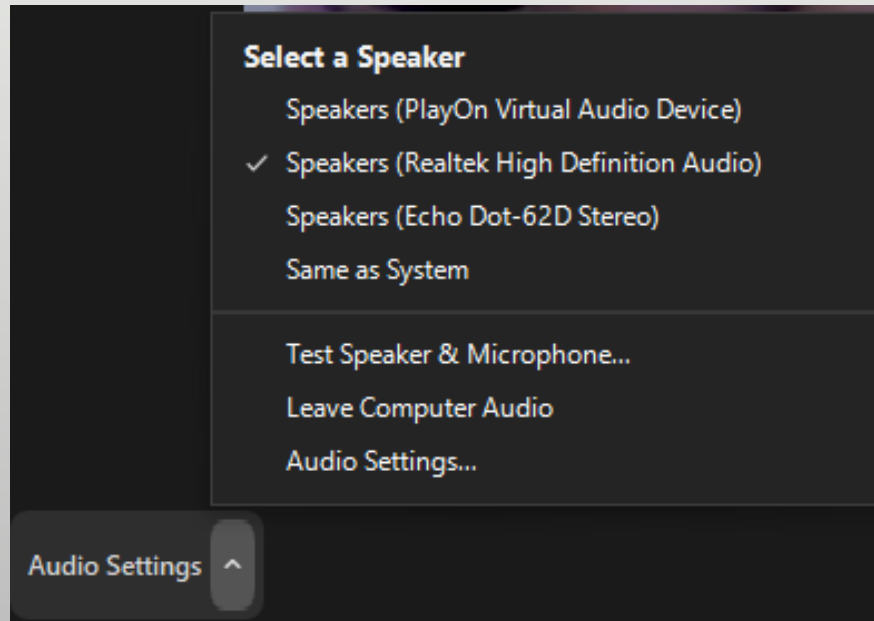
- Watching theatre on your TV is more fun than your laptop! You probably already have an HDMI cable going into your TV (DVD player, Roku connector), just plug that into your laptop
- You might need a converter for certain laptops for this to work.
- You might need to go into your computer's display settings to optimize the TV video output.
- You will not require your camera for this show, so your laptop can be placed anywhere, so long as it is connected to your TV and charging.
- A remote mouse and keyboard are not required, but will make your computer much easier to operate from the comfort of your couch.

Adjust Audio Settings



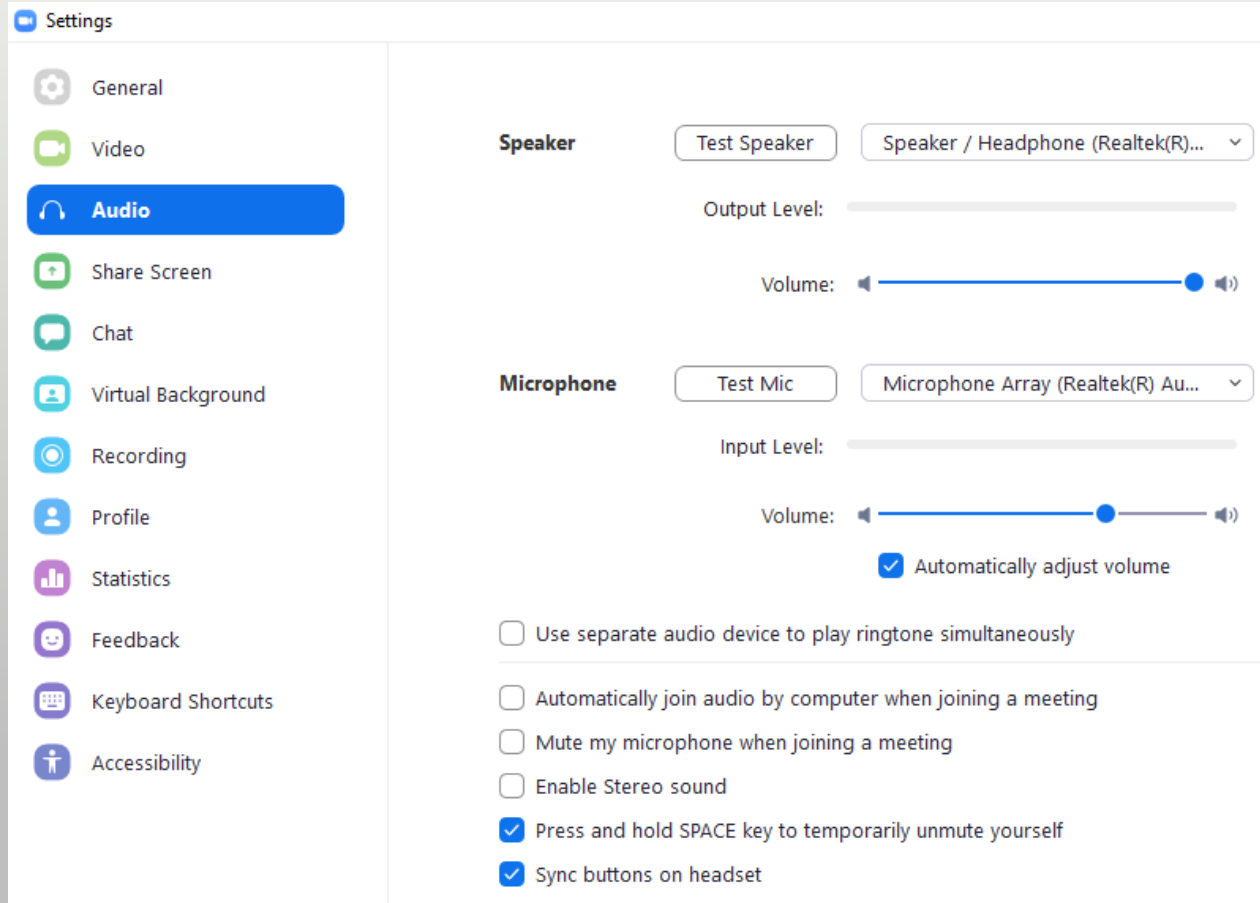
- Log into your Zoom account. If you do not have one, it's easy to create one.
- Go into any Zoom call, even if no one else is there, in the bottom left, click the triangle to the right of "Join Audio" and click "Audio Settings."

Adjust Audio Settings



- If you have already joined the *Love's Labour's Lost* performance and want to adjust your audio settings from within our Zoom room, the audio settings are still in the bottom left but look a little different.
- Click “audio settings”

Adjust Audio Settings



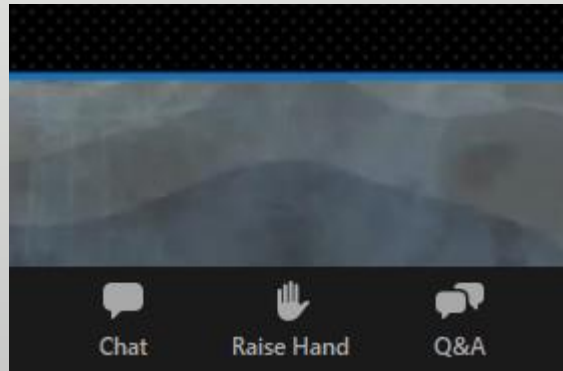
- Click “Test Speaker” to test your audio output. You might need to adjust the volume control.
- You can change where you are playing sound by clicking the output device to the right of “Test Speaker.” You might want to play audio out of your TV, or a Bluetooth speaker, to optimize your audio. You can also plug a wired computer speaker into your laptop’s headphone jack.
- If you want to join us for interactive crowd moments, check your microphone settings as well.

Quiet Your Space



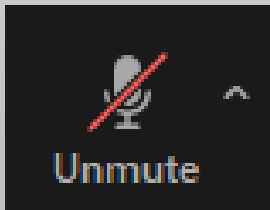
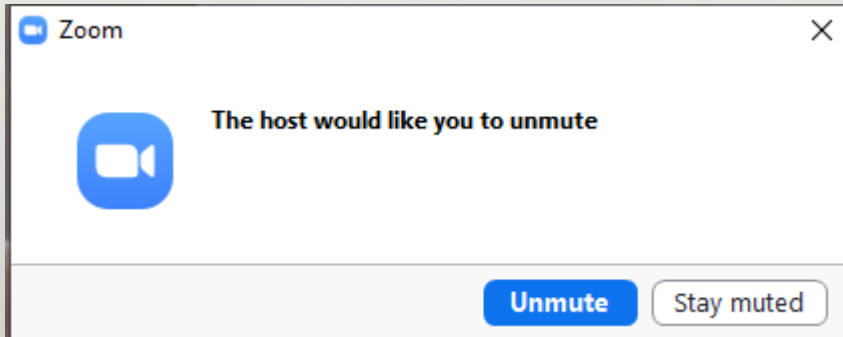
Just like in a live theatre, make sure you remove all distractions. Silence your phone, if you can hear traffic outside close your windows, and if you have any noisy roommates, let them know you are watching a live performance and would like some quiet.

Unmuting Yourself



- Although not required, during our performance there are brief moments where we will encourage you to unmute yourself so you can join other audience members in cheering for our actors (it makes for a better live experience, trust us).
- If you would like to participate, first “raise your hand” before the show by clicking the hand icon at the bottom.

Unmuting Yourself



- You will get a message from our tech team asking for your confirmation, you will then getting a message saying that the host would like you to unmute, click “unmute.”
- You will now see a microphone icon at the bottom left of your screen, click it to mute yourself for now. We will tell you during the show when it is time to click this icon again to unmute yourself and cheer!

Finally, Grab a Drink and Enjoy the Show!

